



Community Acceptance, Engagement and Buy-In: *Trained Community Structures Mobilize Resources to Complement AENN Intervention*

AENN Media Brief



USAID-AENN Overview

The USAID funded Addressing Education in Northeast Nigeria (AENN) is responding to the immediate educational needs of over 200,000 children and youth in 150 communities in Borno and Yobe states through provision of safe non-formal and formal education, teaching/learning materials, teacher training in learner-centered pedagogy, social-emotional learning, and inclusivity, and increased stakeholders awareness in support for sustainable improvement of education systems at the community and government levels.



Background

Major findings from the AENN Rapid Education and Risk Analysis (RERA) and Gender Equality and Social Inclusion Strategy (GESI) assessments and community mapping exercises conducted on Borno and Yobe states, revealed significant levels of willingness among target communities to prioritize education and host safe learning spaces to support the education of their children - including girls, IDPs, and children living with disabilities. In addition, the findings also showed that poverty, lack of awareness about the value of education, fear of attacks and abduction of children were some of the reasons for exclusion of children from access to quality basic education. These factors impeded children's access to education and resulted in about 3 million of out-of-school children in Borno and Yobe States alone.



Process

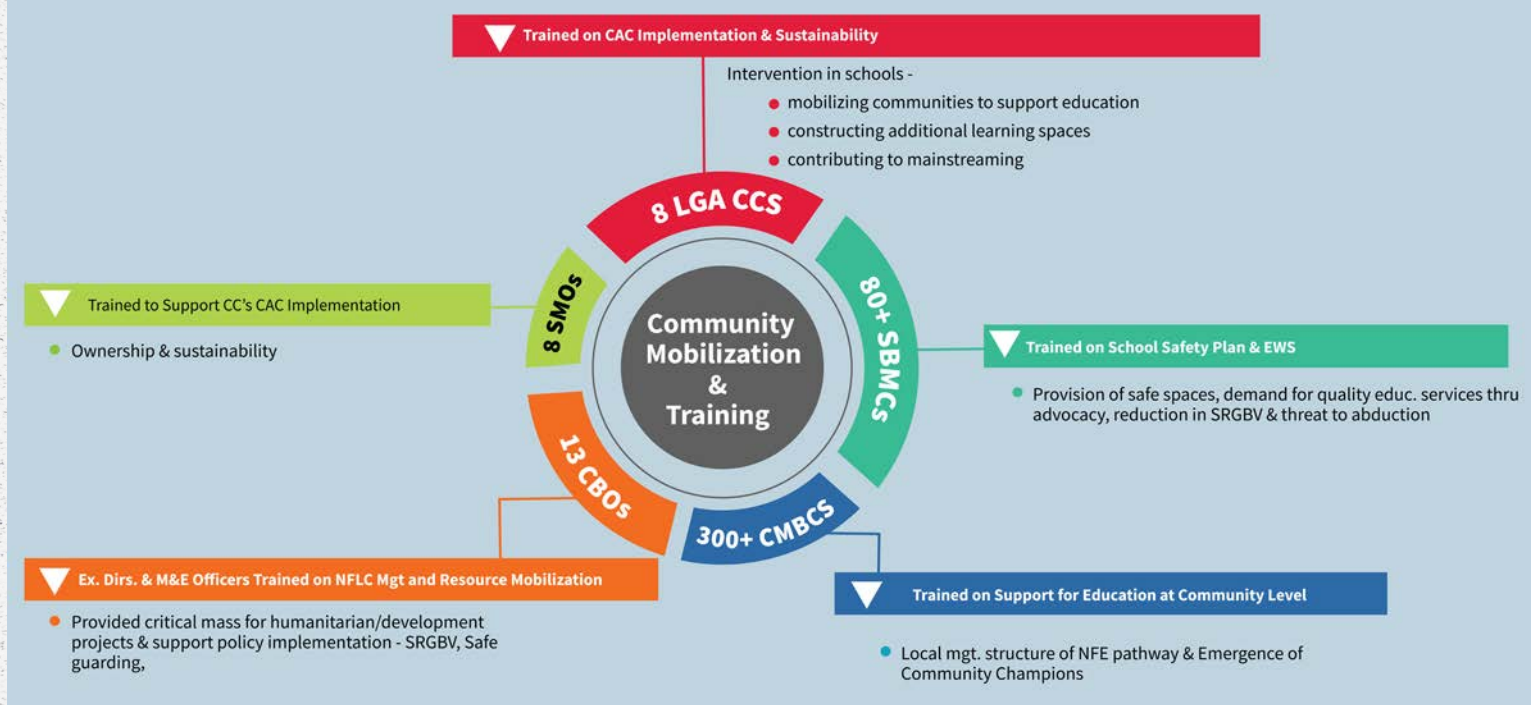
The findings informed some of the AENN Activity design, that focused on strengthening key community actors with the needed skills to mobilize resources to support access to safe, qualitative and certified education for a huge number of out of school children in the communities. To achieve this, the following existing community-level structures, as well as key influencers were identified, mobilized and trained on:

- Community Action Cycle (CAC) implementation & sustainability - 8 LGA Community Coalition (CC) structures trained
- School Safety Plan & Early Warning System (EWS) - 80+ School Based Management Committees (SBMCs) trained
- Education at Community Level - 300+ CBMCs trained
- Nonformal Learning Center (NFLC) Management and Resource Mobilization - 13 CBOs trained
- Support CC's CAC Implementation - 8 Social Mobilization Officers trained

This is in line with actualizing USAID's 'Journey to Self-Reliance' in supported communities.

Phases of Community Action Cycle (CAC)





Results

Following the training on AENN community and resource mobilization approach, the trained community structures led initiatives that raised awareness about education opportunities for their children through the conduct of result-oriented advocacies to well-meaning philanthropists, parents/caregivers and government establishments. This absolute commitment is priceless/unquantifiable and it sent a message of acceptance and ownership of the initiative to learners and the communities in general. In the first two years of the project, these structures have mobilized outstanding supports to the tune of N267,202 as evidenced in a few listed leverages below:

● CAC IMPLEMENTATION & SUSTAINABILITY

- Bade CCs mobilized community members to donate 970 blocks valued at about N145,000 (\$387) for the construction of additional one block of two (2) classrooms to address recurrent overcrowding at Custom Primary School in Keisawa community in Bade LGA of Yobe State. The school hosted AENN NFLCs with a large number of learners attending from Kesawa and Abujan Amare communities in Bade LGA. Ibrahim Sanusi, the Bade CC chairperson reported that the donation, motivated Yobe State Government via the State Universal Basic Education Board, to award the construction of an additional block of 2 classrooms and an LGA education authority staff office, in the primary School.

"After one of the trainings conducted by the AENN Team on resource mobilization, gender mainstreaming and record keeping, we [CCs in Bade] were motivated to source for resources within the communities to build classroom in

Custom Primary School to minimize overcrowding in classrooms. We started by organizing a sensitization meeting with SBMCs, CBMCs and parents/caregivers of the school on their role in improving the school environment for better learning. We then requested for donation of a block/brick from the participants at the meeting. We were able to mobilize 490 blocks from the SBMC, CBMCs and parent/caregivers. We then reached out to other community members such as transport union, market associations and youth groups that supported us with additional 480 blocks/bricks to make a total of 970 blocks/bricks."

Ibrahim Sanusi, Bade LGA CC Chairperson Ibrahim

● EMERGENCE OF COMMUNITY CHAMPIONS

- Konduga LGA CCs donated school uniforms valued at approximately N70,540 (\$188) and scholastic materials worth N10,300 (\$28.60) to support the education of 58 NFLC learners who mainstreamed into Moromti Primary School in the LGA.
- Alhaji Bello Bulama Izge, Njiwaji Primary School headteacher, in Damaturu, Yobe State, donated a school uniform to each of the 14 (10 girls and 4 boys) who were mainstreamed from the AENN NFLC into the school. Total cost of the uniforms is estimated at N17,024 (\$45.4) - N1,216/\$3.2 per uniform.
- Hajia Amina Umar, the head teacher of Central Primary School in Damaturu donated scholastic materials to 20 learners (16 females and 4 males) into the school. The scholastic materials comprised school uniforms (N24,320/\$640), books, white socks and school sandals.